

Lamp Current (A): 0.9A  
 Ignitor Voltage (Min.): 3.5KV  
 Luminaire Rating: Enclosed  
 Burning Position: Universal

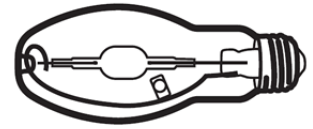
### CM-PLUS ED 70W/U/UVS/942

Product Number: 00381

**Lamp Type:** Ceramic Metal Halide

#### Performance Data

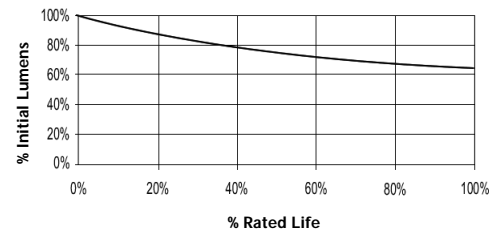
Light Output (Lumens @ 100 hours)	6600
Lamp Lumens Per Watt	94
Rated Life (Hrs. @ 10 Hr. /Start)	18000
Correlated Colour Temperature (K)	4200
Chromaticity (CIE - X Y)	375, 370
Colour Rendering Index (CRI) or (Ra)	90+
Typical Warm Up Time (Minutes)	3
Typical Hot Restart Time (Minutes)	15
Burning Position	Universal



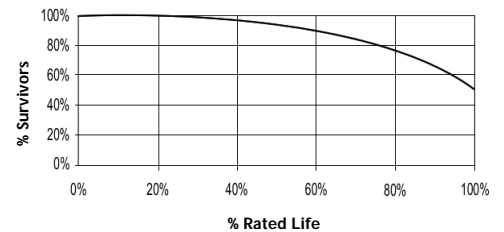
#### Physical Data / Requirements

Base Designation	E27
Bulb Designation	E17
Bulb Diameter (mm)	54
Max. Overall Length (mm)	141
Light Centre Length (mm)	89
Effective Arc Length (mm)	-
Max. Base Temperature (°C)	210
Max. Bulb Temperature (°C)	450
Luminaire Type	Enclosed
Socket Pulse Rating (KV)	4.5
Mercury Content (mg)	5.7

**Lumen Maintenance**



**Lamp Mortality**



#### Lamp Electrical Data / Requirements

IEC Standard	-
Lamp Wattage (W)	72
Lamp Operating Voltage (V)	90
Lamp Operating Current (Amps)	0.9
Min. Open Circuit Voltage (RMS)	198
Min. Starting Pulse (Peak V)	3500-5000
Min. Pulse Width at 2700V (microseconds)	1
Min. Pulse Rate Per 1/2 cycle	1
Pulse Position (Electrical Degrees)	60-90, 240-270

**Revision:** 05.05.2011

#### Notes:

1) This Product Specification contains data about typical performance at nominal power. Actual values may depend on ballast and applications. Complies with (CE), Low Voltage (CE), WEEE and RoHS Directives.