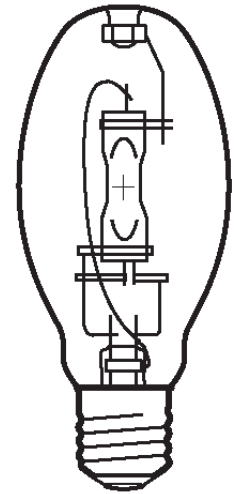


Lamp Current (A): 1.5A
 Ignitor Voltage (Min.): 0.6KV
 Luminaire Rating: Enclosed
 Burning Position: Universal

HIE 175W/U/EURO/4K
Product Number: 36279
Lamp Type: Euro Metal Halide

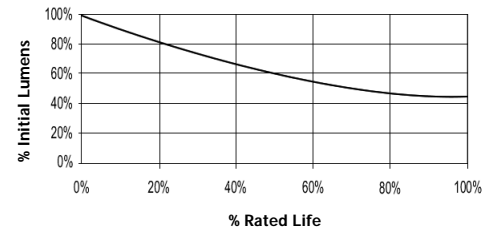
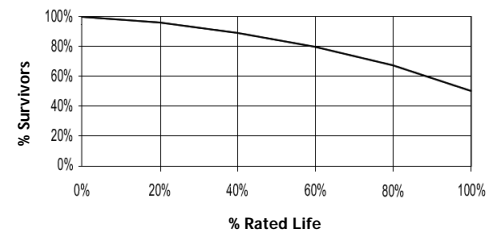
Performance Data

| | |
|--------------------------------------|-----------|
| Light Output (Lumens @ 100 hours) | 14000 |
| Lamp Lumens Per Watt | 80 |
| Rated Life (Hrs. @ 10 Hr. /Start) | 10000 |
| Correlated Colour Temperature (K) | 4000 |
| Chromaticity (CIE - X Y) | 385, 390 |
| Colour Rendering Index (CRI) or (Ra) | 68 |
| Typical Warm Up Time (Minutes) | 3-5 |
| Typical Hot Restart Time (Minutes) | 5-10 |
| Burning Position | Universal |



Physical Data / Requirements

| | |
|----------------------------|----------|
| Base Designation | E40 |
| Bulb Designation | E90 |
| Bulb Diameter (mm) | 90 |
| Max. Overall Length (mm) | 215 |
| Light Centre Length (mm) | 131 |
| Effective Arc Length (mm) | 19.5 |
| Max. Base Temperature (°C) | 250 |
| Max. Bulb Temperature (°C) | 400 |
| Luminaire Type | Enclosed |
| Socket Pulse Rating (KV) | - |
| Mercury Content (mg) | 24.0 |

Lumen Maintenance

Lamp Mortality


Lamp Electrical Data / Requirements

| | |
|---|-------|
| IEC Standard | - |
| Lamp Wattage (W) | 175 |
| Lamp Operating Voltage (V) | 132 |
| Lamp Operating Current (Amps) | 1.5 |
| Min. Open Circuit Voltage (RMS) | 198 |
| Min. Starting Pulse (Peak V) | 600 |
| Min. Pulse Width at 540V (microseconds) | 260 |
| Min. Pulse Rate Per ½ cycle | 1 |
| Pulse Position (Electrical Degrees) | 60-90 |

Revision: 06.06.12

Notes:

- 1) This Product Specification contains data about typical performance at nominal power. Actual values may depend on ballast and applications. Complies with (CE), Low Voltage (CE), WEEE and RoHS Directives.
- 2) This lamp is also compatible with a 3.0-4.5kV ignitor
- 3) Lamp data is based on vertical operation. For horizontal operation lumen output will be reduced by 10% and lamp life reduced by 25%.