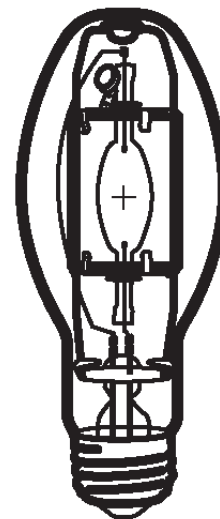


HIPE 100W/U/LU/UVS/732
Product Number: 82539
Lamp Type: White-Lux Plus

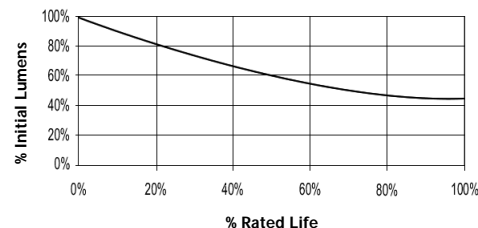
Performance Data

| | |
|--------------------------------------|-----------|
| Light Output (Lumens @ 100 hours) | 8500 |
| Lamp Lumens Per Watt | 85 |
| Rated Life (Hrs. @ 10 Hr. /Start) | 15000 |
| Correlated Colour Temperature (K) | 3200 |
| Chromaticity (CIE - X Y) | 420, 395 |
| Colour Rendering Index (CRI) or (Ra) | 68 |
| Typical Warm Up Time (Minutes) | 1-2 |
| Typical Hot Restart Time (Minutes) | 3-5 |
| Burning Position | Universal |



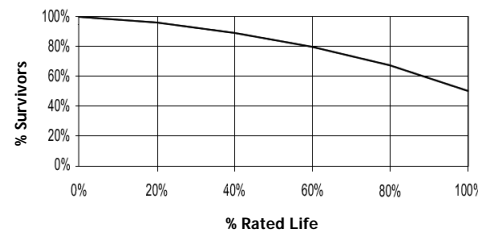
Physical Data / Requirements

| | |
|----------------------------|---------------|
| Base Designation | E27 |
| Bulb Designation | EX54 |
| Bulb Diameter (mm) | 54 |
| Max. Overall Length (mm) | 141 |
| Light Centre Length (mm) | 89 |
| Effective Arc Length (mm) | 12.5 |
| Max. Base Temperature (°C) | 210 |
| Max. Bulb Temperature (°C) | 400 |
| Luminaire Type | Open/Enclosed |
| Socket Pulse Rating (KV) | 4.5 |
| Mercury Content (mg) | 11.0 |

Lumen Maintenance


Lamp Electrical Data / Requirements

| | |
|--|----------------|
| IEC Standard | - |
| Lamp Wattage (W) | 100 |
| Lamp Operating Voltage (V) | 100 |
| Lamp Operating Current (Amps) | 1.1 |
| Min. Open Circuit Voltage (RMS) | 198 |
| Min. Starting Pulse (Peak V) | 3000-4500 |
| Min. Pulse Width at 2700V (microseconds) | 1 |
| Min. Pulse Rate Per ½ cycle | 1 |
| Pulse Position (Electrical Degrees) | 60-90, 240-270 |

Lamp Mortality

Revision: 07.06.12

Notes:

- 1) This Product Specification contains data about typical performance at nominal power. Actual values may depend on ballast and applications. Complies with (CE), Low Voltage (CE), WEEE and RoHS Directives.
- 2) Lamp data is based on vertical operation. For horizontal operation lumen output will be reduced by 10% and lamp life reduced by 25%.