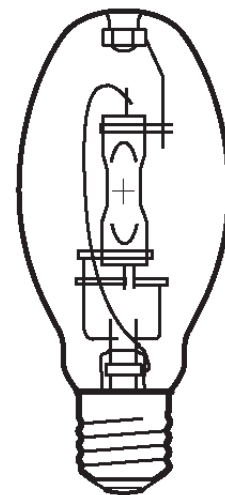


Lamp Current (A): 2.1A
 Ignitor Voltage (Min.): 0.6KV
 Luminaire Rating: Enclosed
 Burning Position: Universal

HIE 250W/U/EURO/4K
Product Number: 88246
Lamp Type: Euro Metal Halide

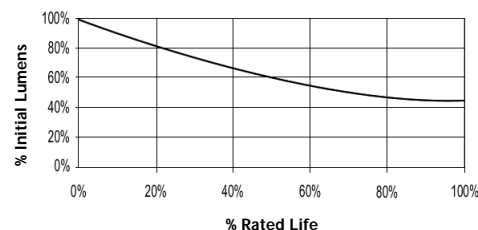
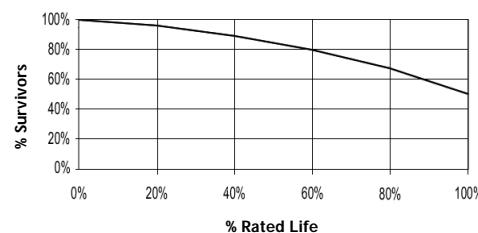
Performance Data

Light Output (Lumens @ 100 hours)	21000
Lamp Lumens Per Watt	84
Rated Life (Hrs. @ 10 Hr. /Start)	10000
Correlated Colour Temperature (K)	4000
Chromaticity (CIE - X Y)	385, 390
Colour Rendering Index (CRI) or (Ra)	68
Typical Warm Up Time (Minutes)	3-5
Typical Hot Restart Time (Minutes)	5-10
Burning Position	Universal



Physical Data / Requirements

Base Designation	E40
Bulb Designation	E90
Bulb Diameter (mm)	90
Max. Overall Length (mm)	215
Light Centre Length (mm)	131
Effective Arc Length (mm)	27
Max. Base Temperature (°C)	250
Max. Bulb Temperature (°C)	400
Luminaire Type	Enclosed
Socket Pulse Rating (KV)	-
Mercury Content (mg)	30.0

Lumen Maintenance

Lamp Mortality


Lamp Electrical Data / Requirements

IEC Standard	-
Lamp Wattage (W)	250
Lamp Operating Voltage (V)	133
Lamp Operating Current (Amps)	2.1
Min. Open Circuit Voltage (RMS)	198
Min. Starting Pulse (Peak V)	600
Min. Pulse Width at 540V (microseconds)	260
Min. Pulse Rate Per 1/2 cycle	1
Pulse Position (Electrical Degrees)	60-90

Revision: 07.06.12

Notes:

- 1) This Product Specification contains data about typical performance at nominal power. Actual values may depend on ballast and applications. Complies with (CE), Low Voltage (CE), WEEE and RoHS Directives.
- 2) This lamp is also compatible with a 3.0-4.5kV ignitor
- 3) Lamp data is based on vertical operation. For horizontal operation lumen output will be reduced by 10% and lamp life reduced by 25%.